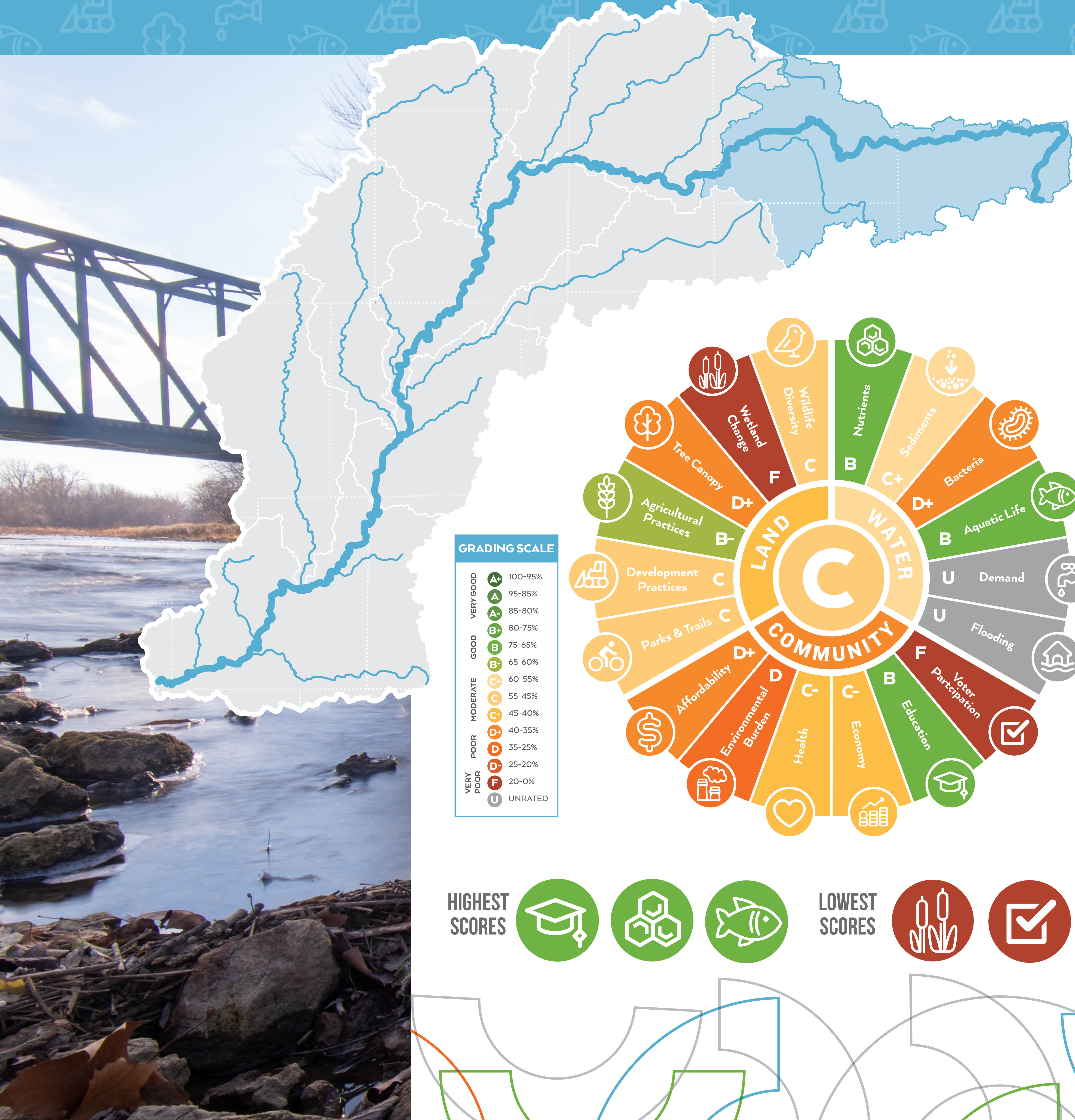


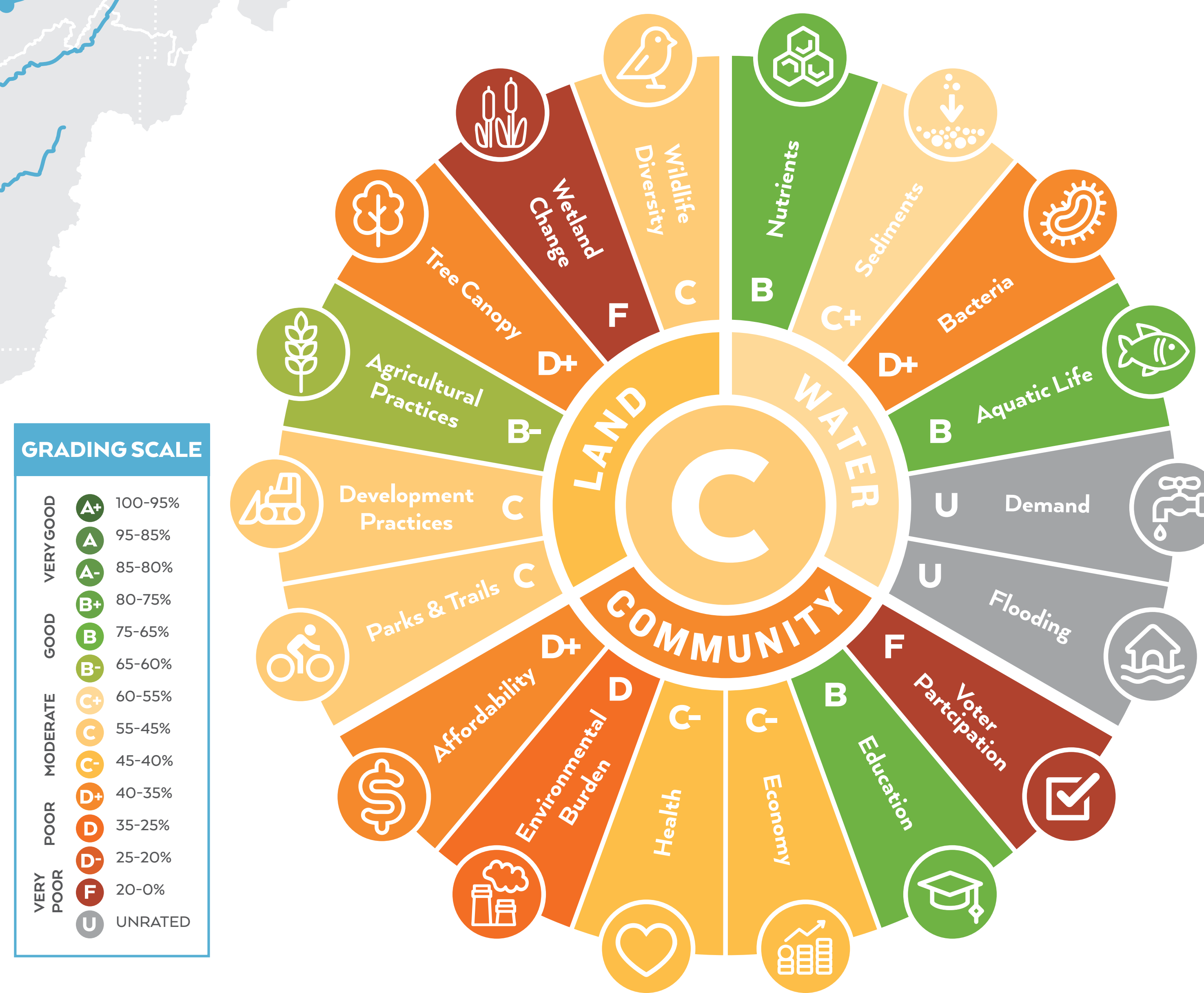
# HEADWATERS & PRAIRIE CREEK RESERVOIR REGION



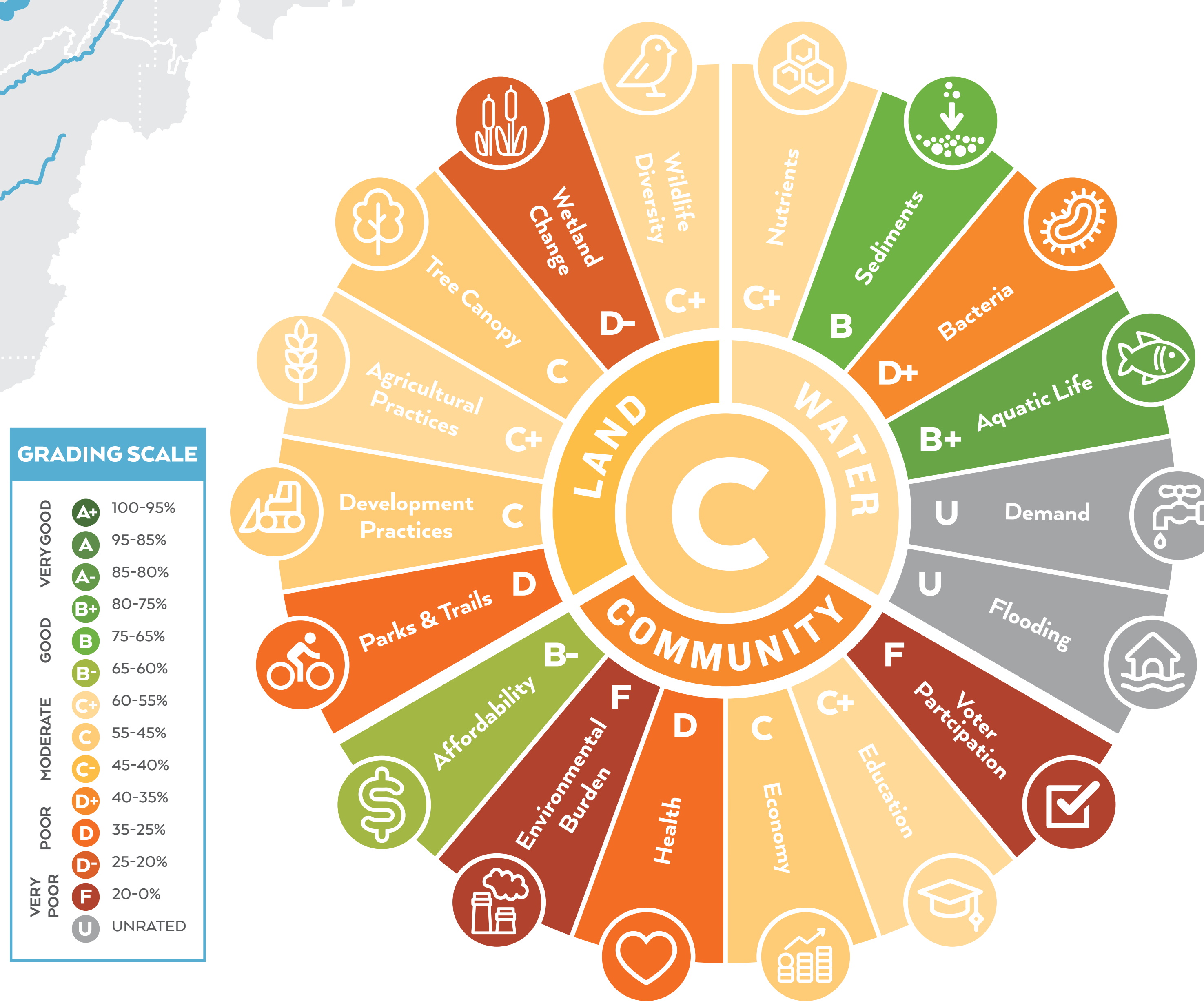
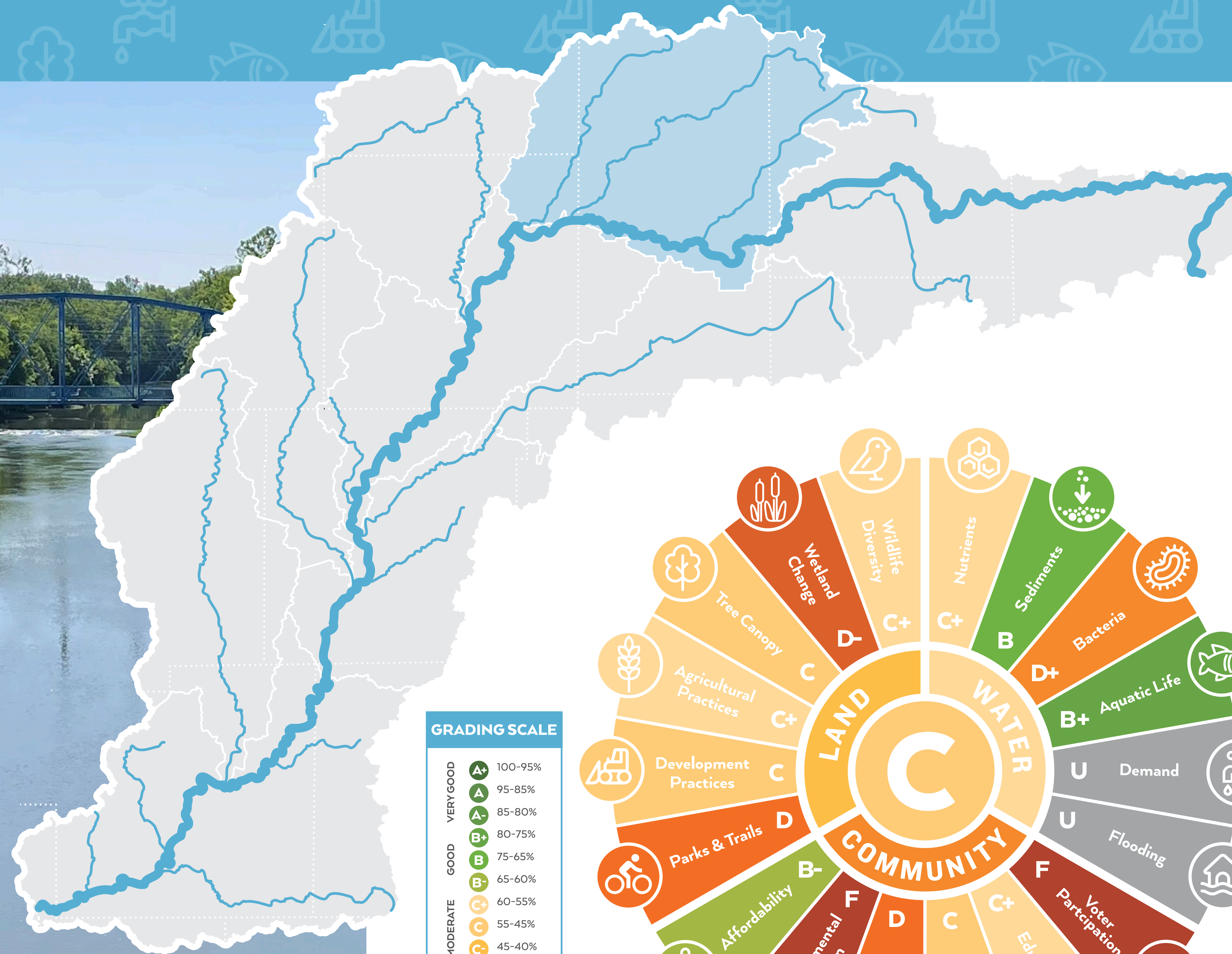
This region encompasses the subwatersheds of Buck Creek and Muncie Creek along with Prairie Creek Reservoir. It is home to Muncie, Yorktown, Winchester, and Daleville. In 2020 the population was 112,356 with 83% of the residents identifying as White, 7% as Black, 3% as Hispanic, and 17% as a person of color. The region is dominated by agriculture which covers 73% of the land, while 16% is developed, and 11% is natural (forest, wetland, water).

**This region has an overall score of 47%, a C.**

By category, the region has a **D+ (39%) in Community**, **C- (43%) in Land**, and **C+ (59%) in Water**. The lowest scoring indicators are *Wetland Change* and *Voter Participation* with failing (F) scores in each. The highest scoring indicators are *Education*, *Nutrients* (levels in the water), and *Aquatic Life*, all with a B.



# KILLBUCK, PIPE, & DUCK CREEKS REGION



GRADING SCALE	
VERY GOOD	A+ 100-95%
A	95-85%
B	85-75%
GOOD	75-65%
C	65-55%
Moderate	55-45%
D	45-35%
POOR	35-25%
Very Poor	25-20%
F	20-0%
U	UNRATED

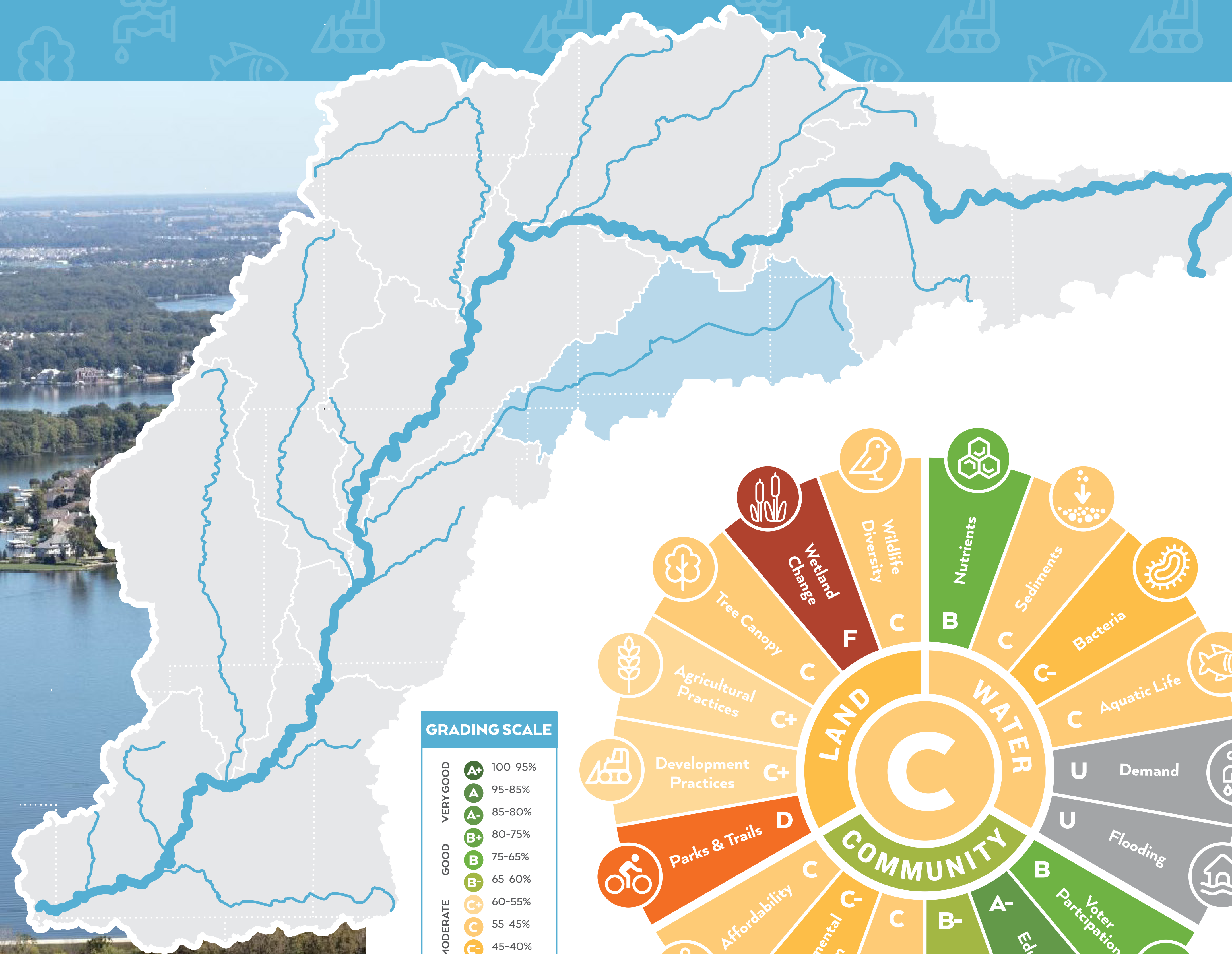
This region encompasses the subwatersheds of Killbuck Creek, Pipe Creek, and Duck Creek. It is home to Elwood, Alexandria, Frankton, and the northern half of Anderson. In 2020 the population was 85,971, with 83% identifying as White, 8% as Black, 5% as Hispanic, and 18% as a person of color. The region is dominated by agriculture which covers 78% of the land, while 14% is developed, and 8% is natural (forest, wetland, water).

**This region has an overall score of 47%, a C.**

By category, the region has a **D+ (37%) in Community**, **C- (44%) in Land**, and **C+ (59%) in Water**. The lowest scoring indicators are *Environmental Burden* and *Voter Participation*, both with failing grades (F). The highest scoring indicators are *Aquatic Life* with a B+ and *Sediment* (amount in the water) with a B.



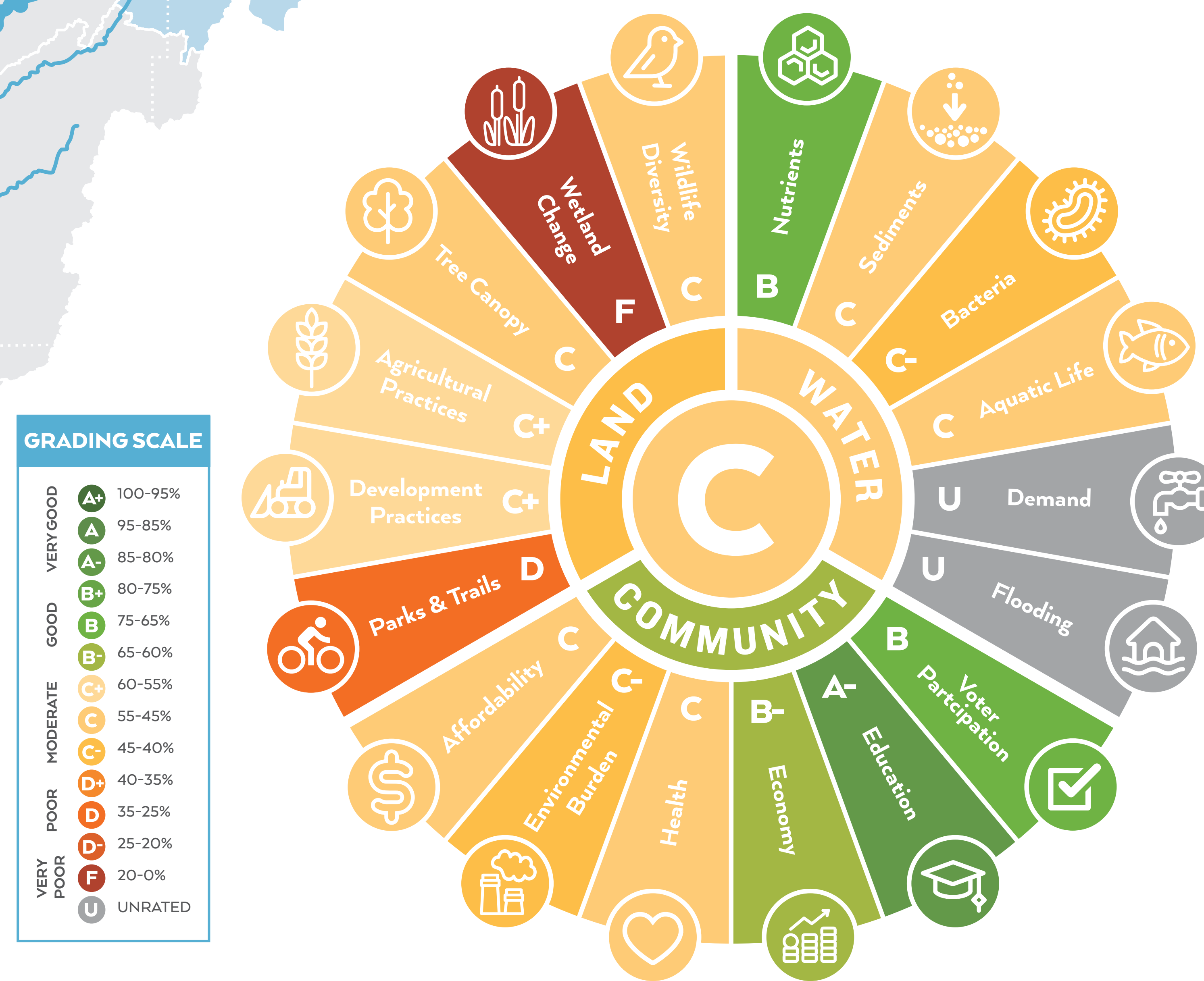
# UPPER FALL CREEK & GEIST RESERVOIR REGION



This region encompasses the subwatershed of Upper Fall Creek along with Geist Reservoir. It is home to Pendleton, McCordsville, Ingalls, and the southern half of Anderson. In 2020 the population was 99,326, with 82% identifying as White, 8% as Black, 4% as Hispanic, and 19% as a person of color. The region is dominated by agriculture which covers 68% of the land, while 20% is developed, and 12% is natural (forest, wetland, water).

**This region has an overall score of 51%, a C.**

By category, the region has a **B- (61%) in Community**, **C- (42%) in Land**, and **C (52%) in Water**. The lowest scoring indicators are *Wetland Change* and *Parks & Trails* with a D. The highest scoring indicators are *Education* with an A-, *Voter Participation* and *Nutrients* with a B.

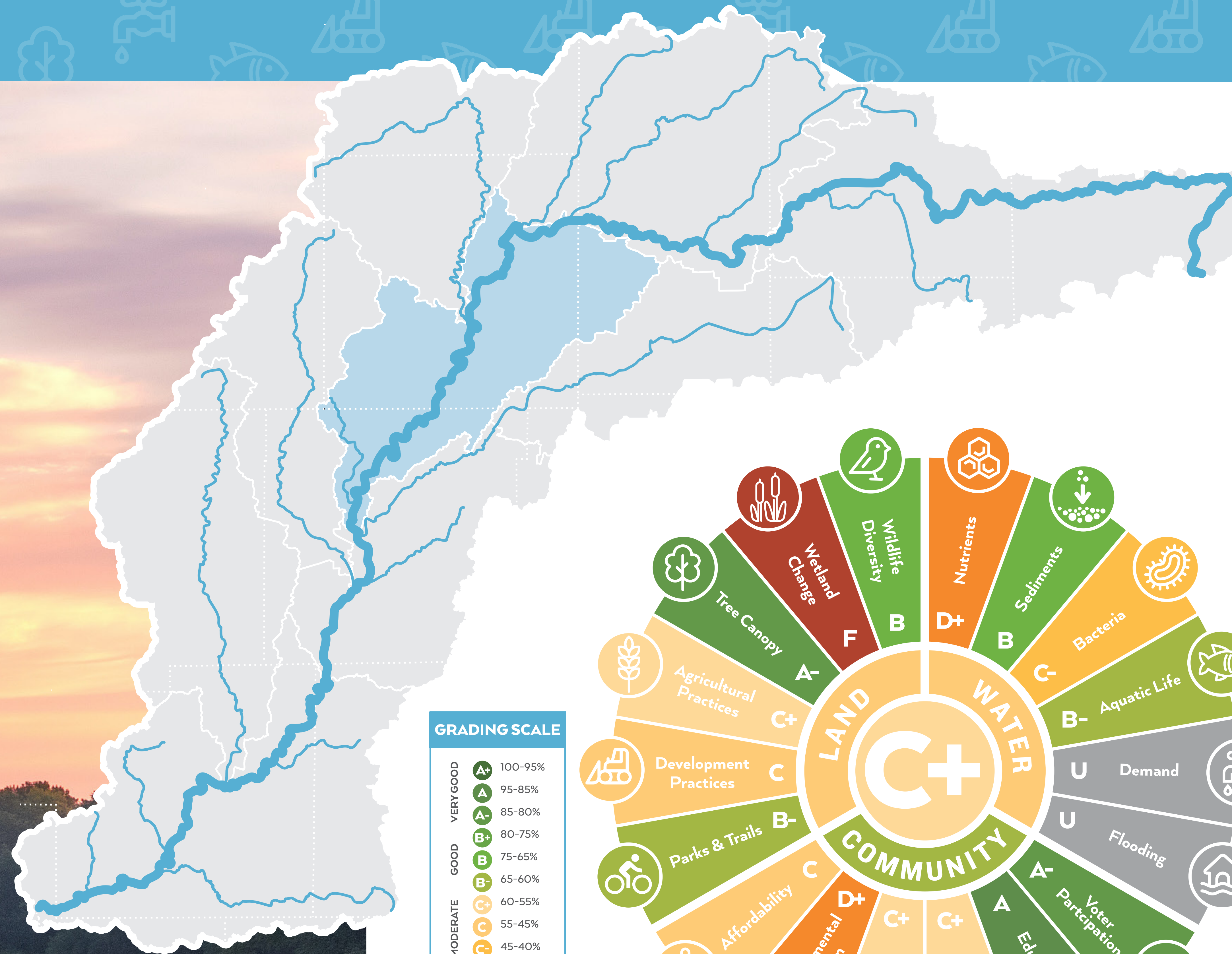


GRADING SCALE	
VERY GOOD	100-95%
A+	95-85%
A	85-80%
A-	80-75%
B+	75-65%
B	65-60%
B-	60-55%
GOOD	55-45%
C+	45-40%
C	40-35%
C-	35-25%
POOR	25-20%
D+	20-0%
D	
D-	
VERY POOR	
F	
UNRATED	
U	



Photo Credit: Carol M. Highsmith

# STONY & CROOKED CREEKS REGION



This region encompasses the subwatersheds of Stony Creek and Crooked Creek. It is home to Carmel, Noblesville, Fishers, Westfield, and the northern part of Indianapolis. In 2020 the population was 427,437, with 72% identifying as White, 12% as Black, 7% as Hispanic, and 29% as a person of color. The region is dominated by development on 52% of the land, while 39% is in agriculture, and 9% is natural (forest, wetland, water).

**This region has an overall score of 56%, a C+.**

By category, the region has a **B- (63%) in Community**, **C (51%) in Land**, and **C (54%) in Water**. The lowest scoring indicators are *Wetland Change* with an F, *Environmental Burden* and *Nutrients* (levels in the water) with a D+. The highest scoring indicators are *Education* with an A, *Tree Canopy* and *Voter Participation* with an A-.

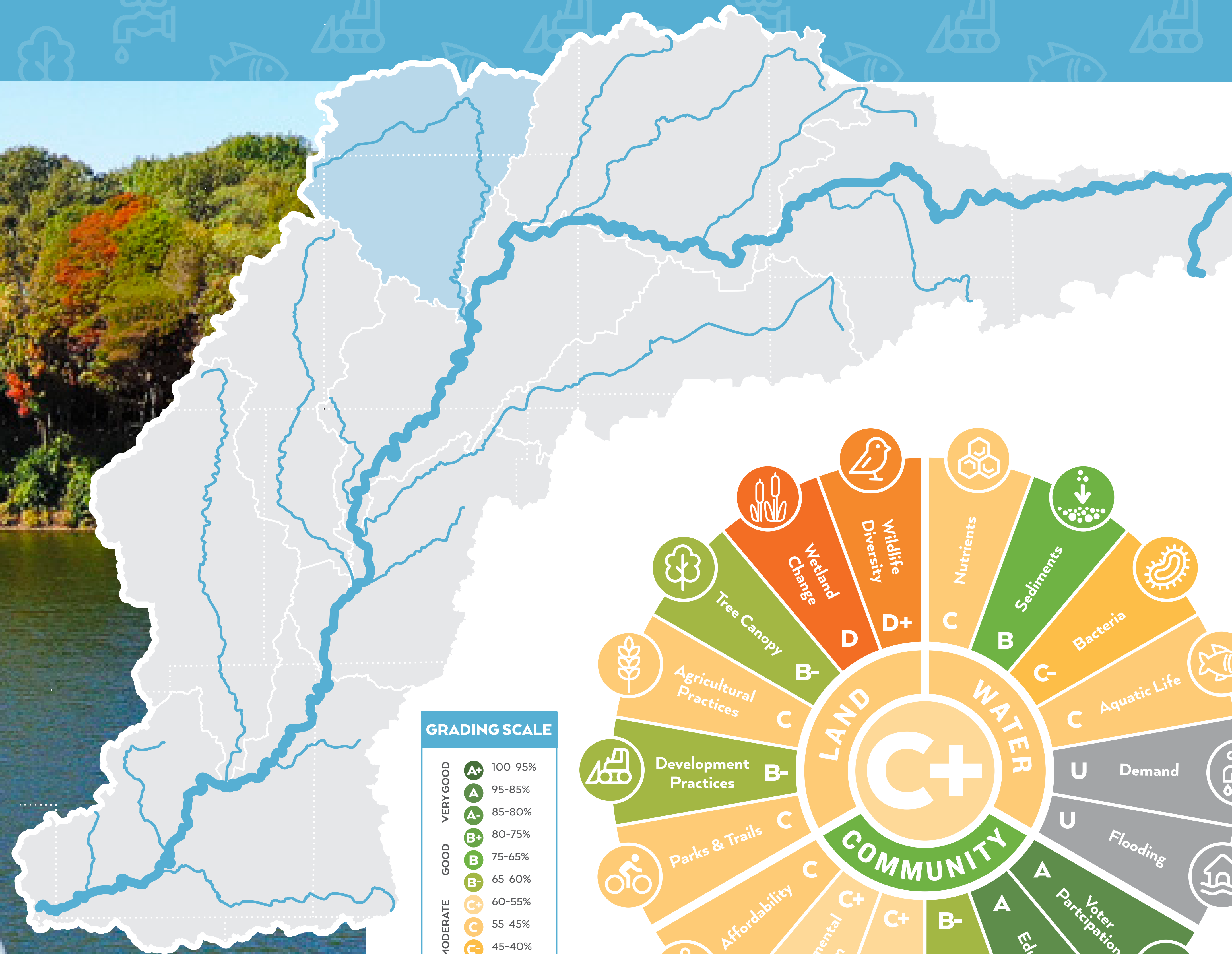
GRADING SCALE	
VERY GOOD	A+ 100-95%
GOOD	A 95-85%
	B+ 85-80%
	B 80-75%
	B- 75-65%
	C+ 65-60%
	C 60-55%
MODERATE	C- 55-45%
	D+ 45-40%
	D 40-35%
POOR	D- 35-25%
	F 25-20%
VERY POOR	F- 20-0%
	U UNRATED



**HIGHEST SCORES** **LOWEST SCORES**



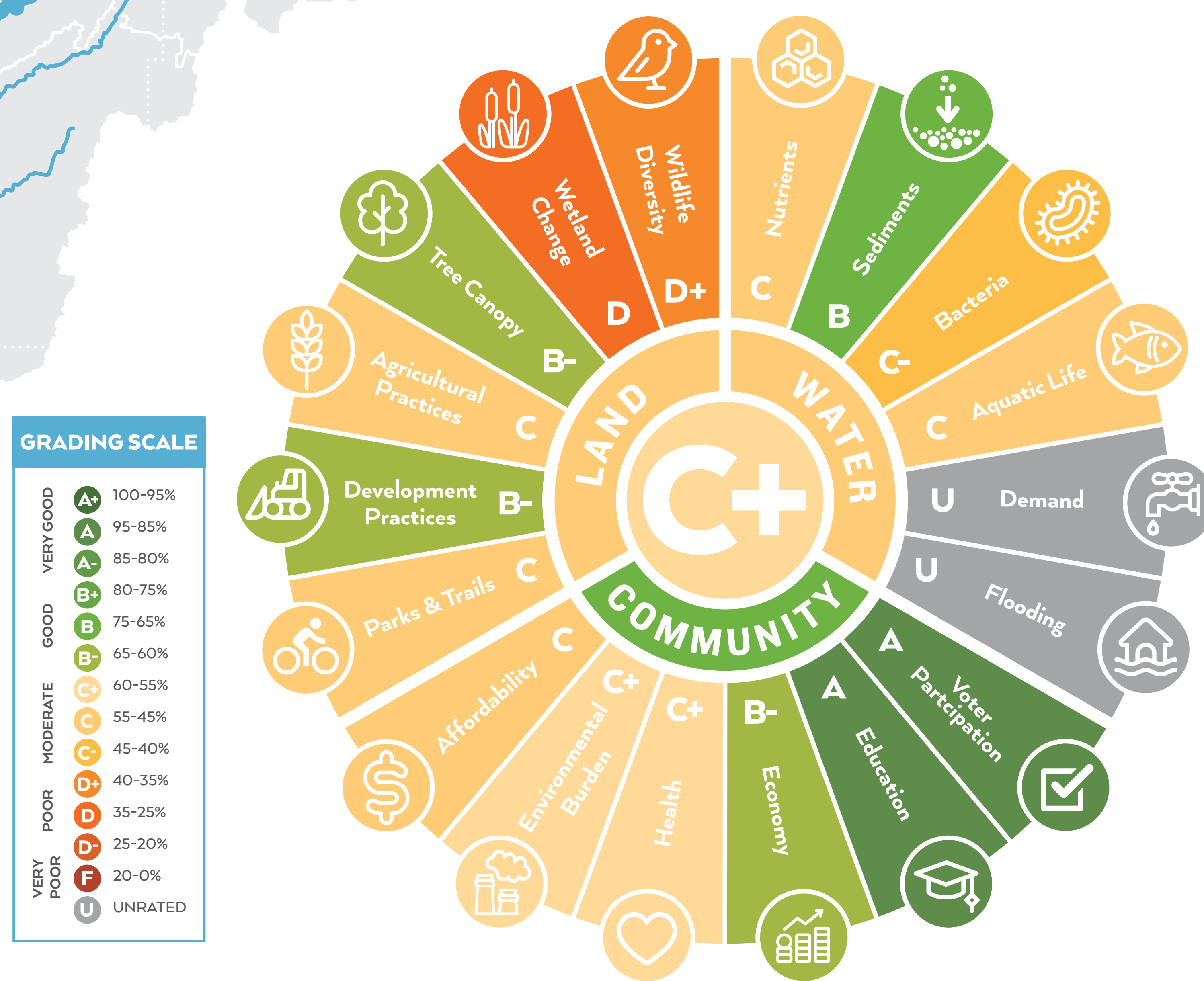
# CICERO CREEK & MORSE RESERVOIR REGION



This region encompasses the subwatershed of Cicero Creek along with Morse Reservoir. It is home to Cicero, Tipton, Sheridan, and the northwest corner of Noblesville. In 2020 the population was 41,747, with 91% identifying as White, 1% as Black, 4% as Hispanic, and 10% as a person of color. The region is dominated by agriculture covering 82% of the land, while 11% is developed, and 7% is natural (forest, wetland, water).

**This region has an overall score of 57%, a C+.**

By category, the region has a **B (68%) in Community**, **C (51%) in Land**, and **C (48%) in Water**. The lowest scoring indicators are *Wetland Change* with a D and *Wildlife Diversity* with a D+. The highest scoring indicators are *Education* and *Voter Participation*, both with an A.



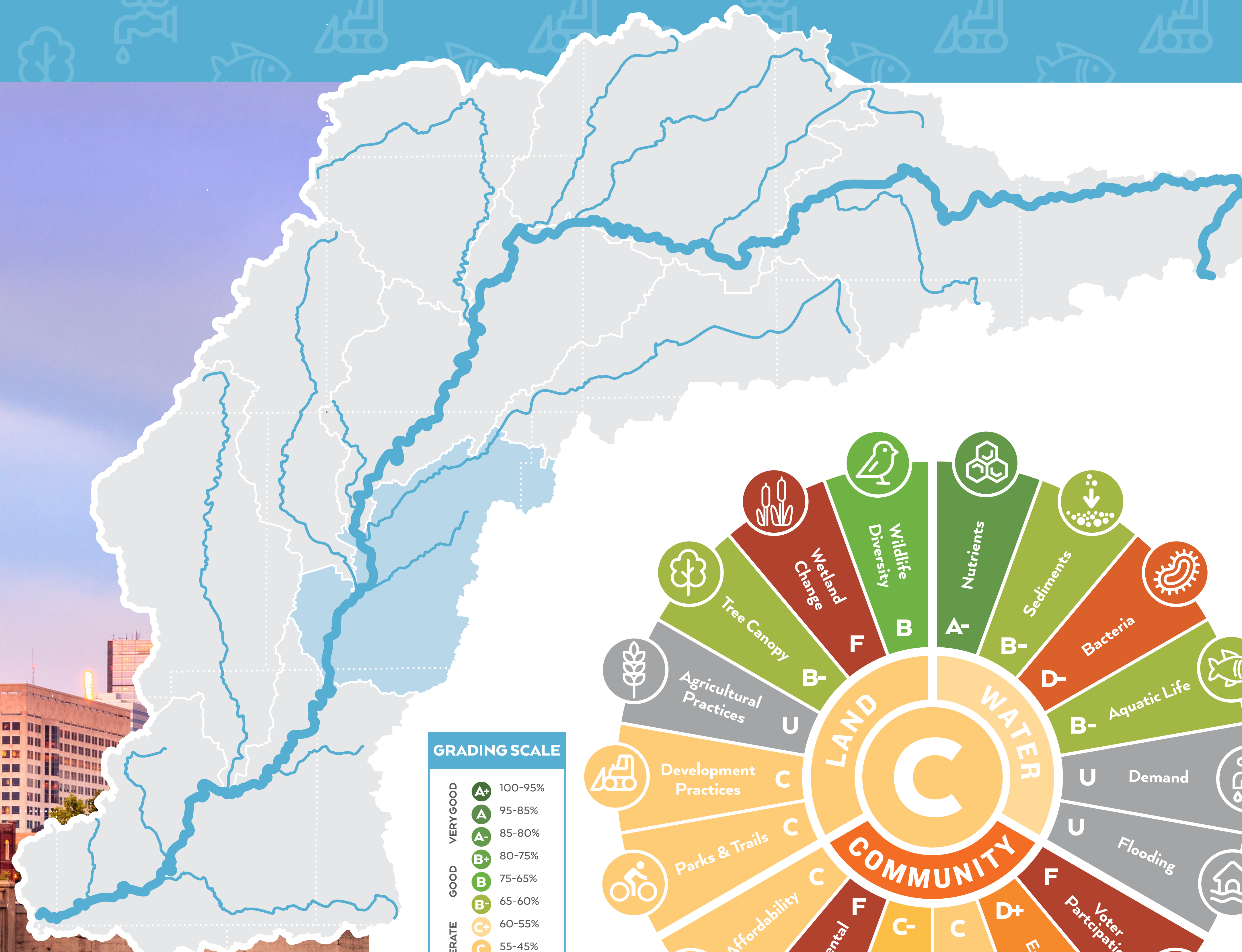
Grade	Percentage
A+	100-95%
A	95-85%
A-	85-80%
B+	80-75%
B	75-65%
B-	65-60%
C+	60-55%
C	55-45%
C-	45-40%
D+	40-35%
D	35-25%
D-	25-20%
F	20-0%
U	UNRATED

HIGHEST SCORES LOWEST SCORES



Photo Credit: Mike Berry

# LOWER FALL CREEK & PLEASANT RUN REGION



GRADING SCALE	
VERY GOOD	A+ 100-95%
GOOD	A 95-85%
GOOD	A- 85-80%
GOOD	B+ 80-75%
GOOD	B 75-65%
GOOD	B- 65-60%
MODERATE	C+ 60-55%
MODERATE	C 55-45%
MODERATE	C- 45-40%
POOR	D+ 40-35%
POOR	D 35-25%
POOR	D- 25-20%
POOR	F 20-0%
UNRATED	U



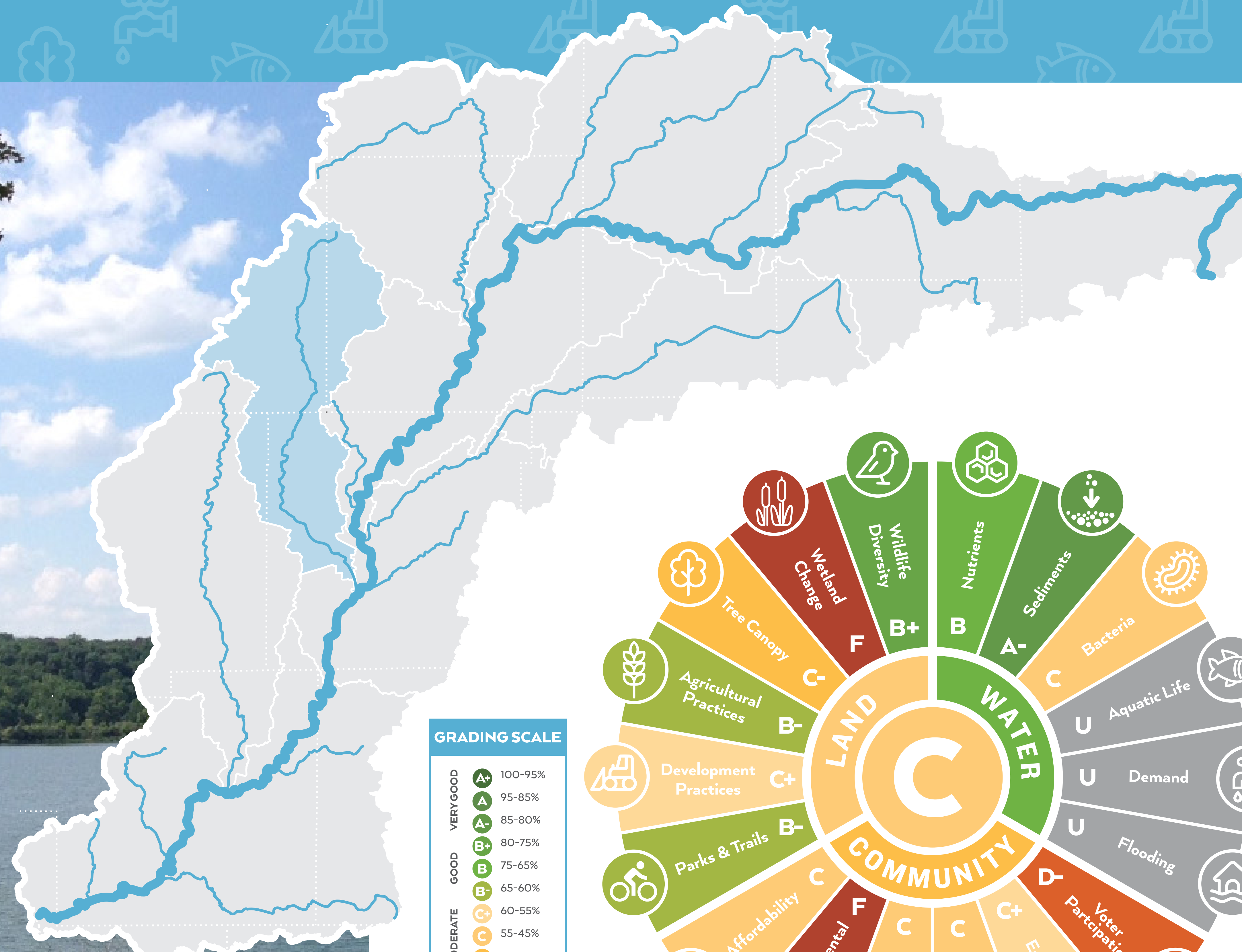
This region encompasses the subwatersheds of Lower Fall Creek and Pleasant Run. It is home to Indianapolis, Lawrence, Beech Grove, Southport, and the northwestern part of Greenwood. In 2020 the population was 566,155, with 56% identifying as White, 24% as Black, 12% as Hispanic, and 46% as a person of color. The region is dominated by development on 82% of the land, while 11% is in agriculture, and 7% is natural (forest, wetland, water).

**This region has an overall score of 45%, a C.**

By category, the region has a **D (32%) in Community**, **C (47%) in Land**, and **C+ (57%) in Water**. The lowest scoring indicators are *Environmental Burden*, *Wetland Change*, and *Voter Participation* which are all failing F. The highest scoring indicators are *Nutrients* (levels in the water) with an A- and *Wildlife Diversity* with a B.



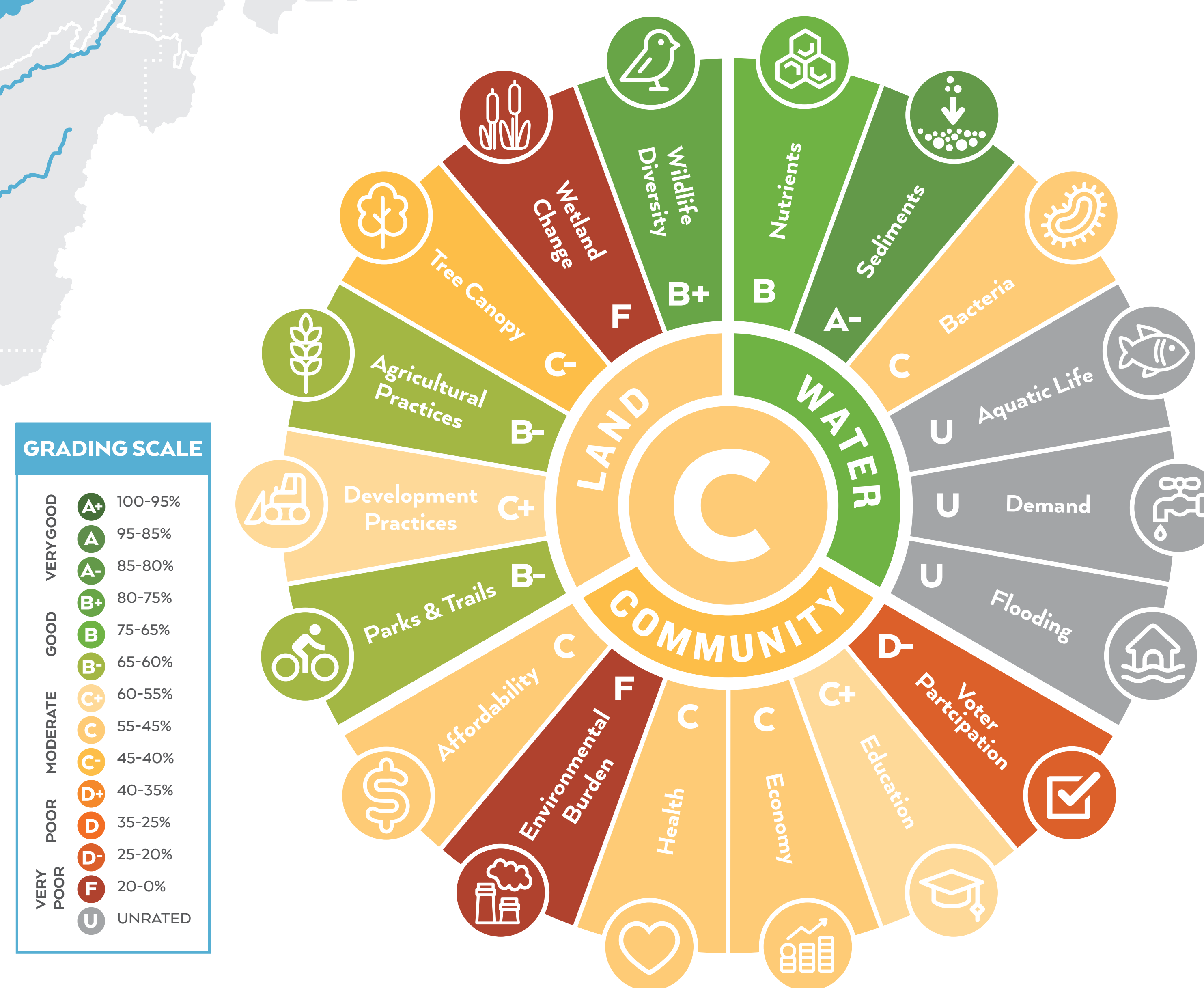
# EAGLE CREEK & EAGLE CREEK RESERVOIR REGION



This region encompasses the subwatershed of Eagle Creek along with Eagle Creek Reservoir. It is home to Zionville, Speedway, Whitestown, and the northwestern portion of Indianapolis. In 2020 the population was 241,274, with 49% identifying as White, 29% as Black, 17% as Hispanic, and 53% as a person of color. The region is dominated by agriculture covering 50% of the land, while 38% is developed, and 12% is natural (forest, wetland, water).

**This region has an overall score of 52%, a C.**

By category, the region has a **C- (41%) in Community**, **C (47%) in Land**, and **B (68%) in Water**. The lowest scoring indicators are *Wetland Change* and *Environmental Burden*, both failing (F). The highest scoring indicators are *Sediment* (amount in the water) with an A- and *Wildlife Diversity* with a B+.



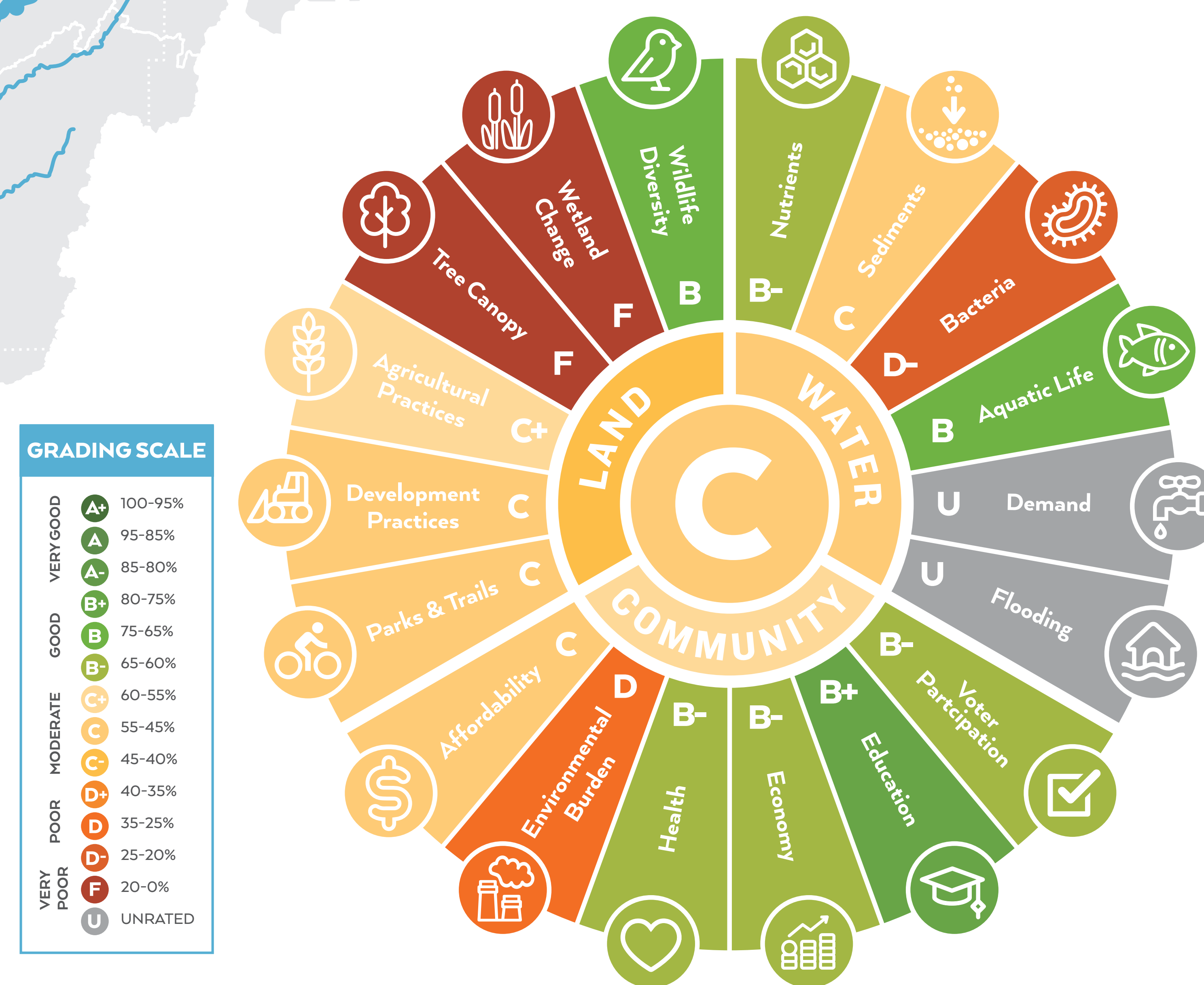
# WHITE LICK CREEK REGION



This region encompasses the subwatershed of White Lick Creek. It is home to Avon, Plainfield, Brownsburg, and Danville. In 2020 the population was 202,062, with 79% identifying as White, 9% as Black, 6% as Hispanic, and 23% as a person of color. The region is dominated by agriculture covering 54% of the land, while 32% is developed, and 14% is natural (forest, wetland, water).

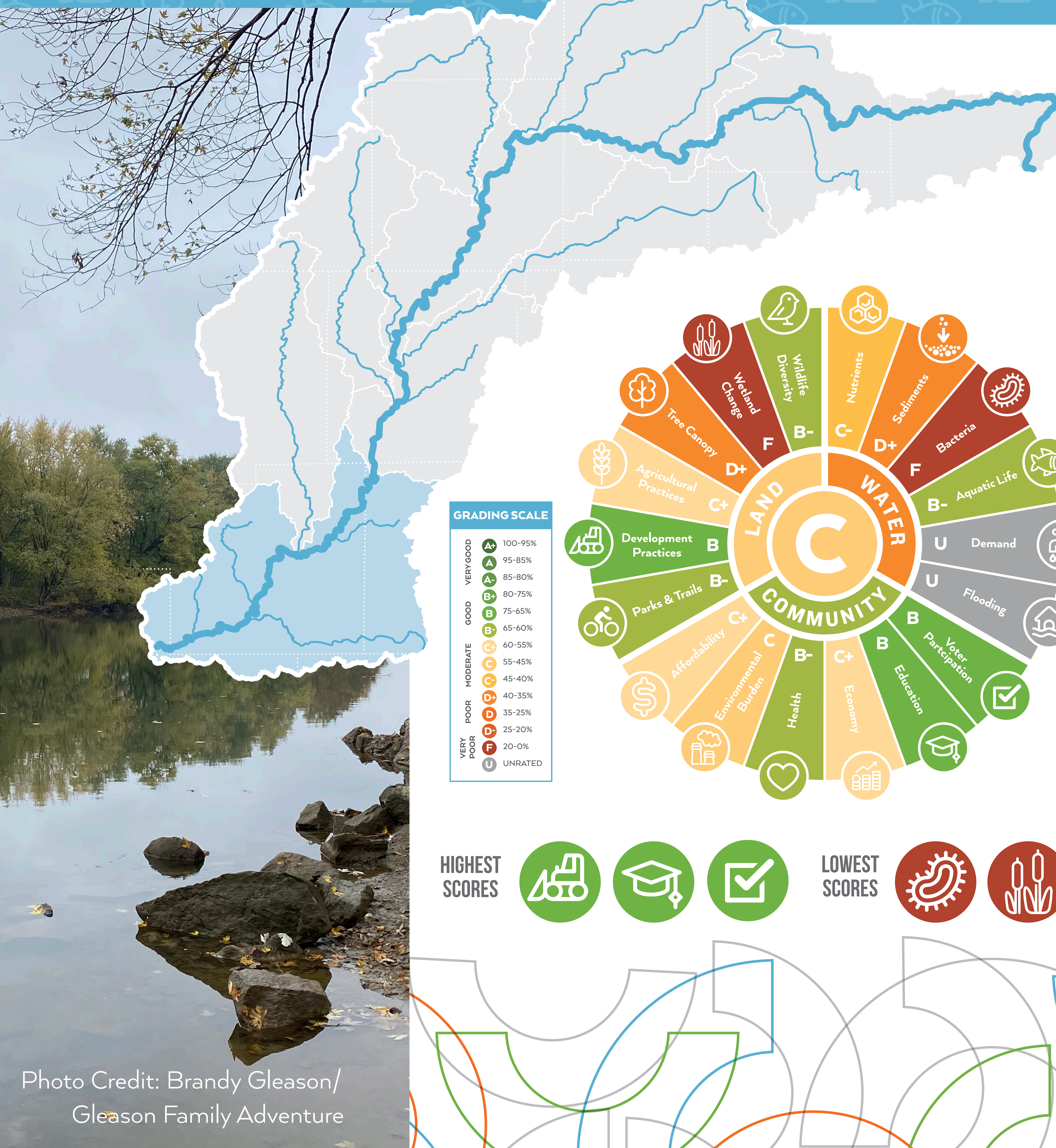
**This region has an overall score of 51%, a C.**

By category, the region has a **C+ (58%) in Community**, **C- (42%) in Land**, and **C (53%) in Water**. The lowest scoring indicators are *Wetland Change* and *Tree Canopy*, both failing (F). The highest scoring indicators are *Education* with a B+, *Wildlife Diversity* and *Aquatic Life* with a B.





# CLEAR, LAMBS, INDIAN, & BUTLER CREEKS REGION



This region encompasses the subwatersheds of Clear Creek, Lambs Creek, Indian Creek, and Butler Creek. It is home to Martinsville, Trafalgar, Bargersville, and Monrovia. In 2020 the population was 102,938, with 90% identifying as White, 2% as Black, 3% as Hispanic, and 11% as a person of color. The region is dominated by natural area (forest, wetland, water) which covers 48% of the land, while 40% is in agriculture, and 12% is developed.

**This region has an overall score of 49%, a C.**

By category, the region has a **B- (61%) in Community**, **C (50%) in Land**, and **D+ (37%) in Water**. The lowest scoring indicators are *Bacteria* (amount in the water) and *Wetland Change*, both failing (F). The highest scoring indicators are *Development Practices*, *Education*, and *Voter Participation*, all with a B.

